

**NEW
PRODUCT**

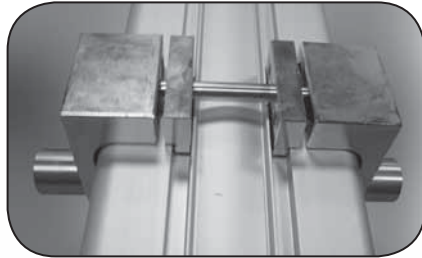
Prices effective
November 1, 2014



ISO CYLINDER (ISO 6431, VDMA24562)

FAQ2R Series









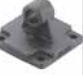



Trunnion mount (See page 7)



Features

1. Magnetic piston is standard in all sizes.
2. Adjustable air cushions at both ends are standard in all sizes.
3. ISO 6431 dimensional interchange.
4. Machined male rod thread with jam nut is standard in all sizes.
5. Hard anodized aluminum cylinder tube I.D. & O.D.; Painted end caps.
6. Cylinders can be operated with or without additional lubrication.
7. Position sensors ordered separately (see page 8).

How to order

FAQ2R	40	X	50	LB																								
Series	Bore (mm)	Stroke	Mounting																									
FAQ2R Standard type 	ø32 ø40 ø50 ø63	Standard Strokes (mm) available for all bore sizes <table border="1"> <tr><td>25</td><td>450</td></tr> <tr><td>50</td><td>500</td></tr> <tr><td>75</td><td>550</td></tr> <tr><td>100</td><td>600</td></tr> <tr><td>125</td><td>650</td></tr> <tr><td>150</td><td>700</td></tr> <tr><td>175</td><td>750</td></tr> <tr><td>200</td><td>800</td></tr> <tr><td>250</td><td>850</td></tr> <tr><td>300</td><td>900</td></tr> <tr><td>350</td><td>950</td></tr> <tr><td>400</td><td>1000</td></tr> </table>	25	450	50	500	75	550	100	600	125	650	150	700	175	750	200	800	250	850	300	900	350	950	400	1000	Tapped holes at both ends – leave blank LB Foot mount  TC Trunnion  FA / FB Front/rear flange  CA Eye mount  CB Pivot mount includes pin  CBB Eye mount base combined with pivot mount (see pg. 6) 	
25	450																											
50	500																											
75	550																											
100	600																											
125	650																											
150	700																											
175	750																											
200	800																											
250	850																											
300	900																											
350	950																											
400	1000																											
FAQ2RW Double rod 	ø80 ø100 ø125	<i>Non-standard strokes are available on request</i>	Rod End Accessories Order separately Please see pg. 5 for part numbers and prices.																									

Specifications 150 psi max.

Conversions
 psi = kgf/cm² x 14.2 inch = mm x 0.0394
 psi = MPa x 145 lb force = N x 0.22

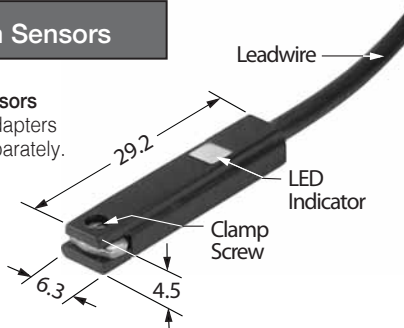
Series	FAQ2R	FAQ2RW
Action	Single rod	Double rod
Bore (mm)	ø32, ø40, ø50, ø63, ø80, ø100, ø125	
Operating media	Compressed air	
Min. Operating pressure	0.07 MPa (0.7 kgf/cm ²) 10 psi	
Max. Operating pressure	1MPa (10.5 kgf/cm ²) 150 psi	
Piston speed range	50~500mm/sec. (1.97~19.7 in./sec.)	
Temperature range	-10°C (14°F) ~ +70°C (158°F) filtered dry air required at temperatures below 0°C (32°F)	
Lubrication	Not required or use ISO VG32	

Bore (mm)	Effective Piston Areas			
	Push		Pull	
	cm ²	in ²	cm ²	in ²
32	8.0	1.25	6.9	1.1
40	12.6	1.95	10.6	1.64
50	19.6	3.04	16.4	2.56
63	31.2	4.83	28.0	4.35
80	50.3	7.79	45.4	7.03
100	78.5	12.17	73.6	11.4
125	122.7	19.0	113.1	17.5

Conversions
 Force lb = psi X in²
 N = lbf X 4.45

Position Sensors

9G49 Series Sensors
 Order sensors, adapters and cord sets separately. See page 8.

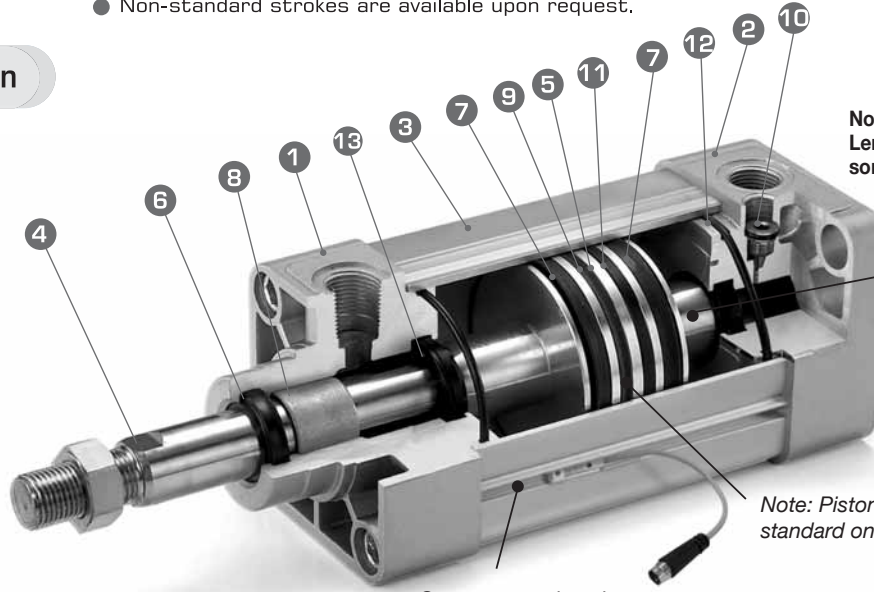


Standard strokes

Stroke \ Bore	25	50	75	100	125	150	175	200	250	300	350	400	450	500	550	600	650	700	750	800	850	900	950	1000
ø32	●	●	●	●	●	●	●	●	●	●	●	●	●	●	●	●	●	●	●	●	●	●	●	●
ø40	●	●	●	●	●	●	●	●	●	●	●	●	●	●	●	●	●	●	●	●	●	●	●	●
ø50	●	●	●	●	●	●	●	●	●	●	●	●	●	●	●	●	●	●	●	●	●	●	●	●
ø63	●	●	●	●	●	●	●	●	●	●	●	●	●	●	●	●	●	●	●	●	●	●	●	●
ø80	●	●	●	●	●	●	●	●	●	●	●	●	●	●	●	●	●	●	●	●	●	●	●	●
ø100	●	●	●	●	●	●	●	●	●	●	●	●	●	●	●	●	●	●	●	●	●	●	●	●
ø125	●	●	●	●	●	●	●	●	●	●	●	●	●	●	●	●	●	●	●	●	●	●	●	●

● Non-standard strokes are available upon request.

Construction



Note:
 Length of air cushion spear may affect some short stroke applications

Air cushion spear Standard length (mm)
ø32 23
ø40, ø50, ø63 28
ø80 35
ø100, ø125 37

Note: Piston magnet is standard on all sizes

Sensor mounting slot

Position sensors (see back page)

- Mounting – The sensor, combined with an adapter, clamps rigidly to the extrusion slot and can be clamped anywhere along the length of the cylinder for very precise piston position sensing.
- Reliability – The annular piston magnet is permanently bonded into a groove in the piston. It is a polarized permanent magnet of rubber bonded barium ferrite that is very stable and is not affected by shock. Under normal usage it will remain magnetized indefinitely.
- Warning – External magnetic fields and/or ferrous objects may affect the strength of the piston magnet therefore affecting sensor actuation and piston position indication.
- Warning – Do not exceed sensor ratings. Permanent damage to sensor may occur. Power supply polarity MUST be observed for proper operation of sensors. See wiring diagrams included with each sensor.

Part list

NO	Description	Material	Qty
1	Front end cover	Aluminum alloy (painted)	1
2	Rear end cover	Aluminum alloy (painted)	1
3	Barrel	Hard anodized aluminum alloy	1
4	Piston rod	Hard chrome plated carbon steel	1
5	Piston	Aluminum alloy	1
6	Piston rod seal	Nitrile - Buna N	1
7	Piston seal	Nitrile - Buna N	2
8	Rod bushing	Oil filled, sintered bronze	1
9	Magnet	Rubber bonded barium ferrite	1
10	Cushion screw	Plated carbon steel	2
11	Wear ring	Acetal	1
12	End cover seal	Nitrile - Buna N	2
13	Cushion ring	Nitrile - Buna N	2

Seal kits

Each kit includes materials for both single rod and double rod cylinders

Bore	Complete Seal kits	Price
ø32	FAQR32-SK	\$13.15
ø40	FAQR40-SK	17.05
ø50	FAQR50-SK	19.30
ø63	FAQR63-SK	21.90
ø80	FAQR80-SK	27.55
ø100	FAQR100-SK	33.60
ø125	FAQR125-SK	66.40



FAQ2R Series Dimensions (mm) ISO CYLINDER (ISO 6431,VDMA24562)

Price List

Cylinders (Weight conversion: lb = kg x 2.2)

Model #	Weight (kg)	Price	Model #	Weight (kg)	Price	Model #	Weight (kg)	Price	Model #	Weight (kg)	Price			
FAQ2R32			FAQ2R40			FAQ2R50			FAQ2R63			FAQ2R80		
" 25	0.68	\$71.25	" 25	0.96	\$75.00	" 25	1.42	\$95.65	" 25	1.96	\$108.75	" 25	2.92	\$168.75
" 50	0.76	73.15	" 50	1.06	76.90	" 50	1.57	101.25	" 50	2.12	116.25	" 50	3.17	172.50
" 75	0.84	76.90	" 75	1.16	80.65	" 75	1.73	105.00	" 75	2.27	121.90	" 75	3.42	178.15
" 100	0.92	78.75	" 100	1.26	82.50	" 100	1.88	108.75	" 100	2.43	125.65	" 100	3.67	183.75
" 125	1.00	82.50	" 125	1.36	86.25	" 125	2.03	112.50	" 125	2.58	131.25	" 125	3.92	191.25
" 150	1.08	86.25	" 150	1.46	90.00	" 150	2.19	116.25	" 150	2.74	135.00	" 150	4.17	196.90
" 175	1.16	90.00	" 175	1.56	93.75	" 175	2.34	120.00	" 175	2.90	140.65	" 175	4.42	208.15
" 200	1.24	91.90	" 200	1.66	95.65	" 200	2.49	123.75	" 200	3.05	146.25	" 200	4.67	219.40
" 250	1.40	99.40	" 250	1.86	103.15	" 250	2.80	131.25	" 250	3.36	155.65	" 250	5.17	225.00
" 300	1.56	106.90	" 300	2.06	110.65	" 300	3.10	146.25	" 300	3.68	165.35	" 300	5.67	231.70
" 350	1.72	114.40	" 350	2.26	118.15	" 350	3.41	153.75	" 350	3.99	175.65	" 350	6.17	245.00
" 400	1.88	121.90	" 400	2.46	125.65	" 400	3.72	161.25	" 400	4.30	183.25	" 400	6.67	258.35
" 450	2.04	128.00	" 450	2.66	135.25	" 450	4.02	167.70	" 450	4.61	190.75	" 450	7.17	270.75
" 500	2.20	134.30	" 500	2.86	144.90	" 500	4.33	178.45	" 500	4.92	210.25	" 500	7.67	316.25
" 550	2.36	136.55	" 550	3.06	157.25	" 550	4.63	192.60	" 550	5.24	227.90	" 550	8.17	349.80
" 600	2.52	144.55	" 600	3.26	162.55	" 600	4.94	201.40	" 600	5.55	236.75	" 600	8.67	365.70
" 650	2.68	151.00	" 650	3.46	173.20	" 650	5.25	210.25	" 650	5.86	250.90	" 650	9.17	381.60
" 700	2.84	159.00	" 700	3.66	178.45	" 700	5.55	219.10	" 700	6.17	256.20	" 700	9.67	395.75
" 750	3.00	167.05	" 750	3.86	187.30	" 750	5.86	229.70	" 750	6.48	266.80	" 750	10.17	411.65
" 800	3.16	178.30	" 800	4.06	208.50	" 800	6.16	254.40	" 800	6.80	300.35	" 800	10.67	455.80
" 850	3.32	181.50	" 850	4.26	215.55	" 850	6.47	263.25	" 850	7.11	310.95	" 850	11.17	471.70
" 900	3.48	189.55	" 900	4.46	222.60	" 900	6.78	272.10	" 900	7.42	321.55	" 900	11.67	489.40
" 950	3.64	195.95	" 950	4.66	229.70	" 950	7.08	279.15	" 950	7.73	330.40	" 950	12.17	505.30
" 1000	3.80	204.00	" 1000	4.86	235.00	" 1000	7.39	288.00	" 1000	8.04	341.00	" 1000	12.67	522.95
FAQ2RW32			FAQ2RW40			FAQ2RW50			FAQ2RW63			FAQ2RW80		
" 25	0.73	\$119.65	" 25	1.16	\$141.70	" 25	1.74	\$160.55	" 25	2.28	\$182.60	" 25	3.46	\$255.00
" 50	0.84	122.80	" 50	1.30	145.25	" 50	1.95	170.00	" 50	2.50	195.20	" 50	3.81	260.70
" 75	0.95	129.10	" 75	1.44	152.30	" 75	2.16	176.30	" 75	2.71	204.65	" 75	4.16	269.20
" 100	1.06	132.25	" 100	1.58	155.85	" 100	2.37	182.60	" 100	2.93	210.95	" 100	4.51	277.70
" 125	1.17	138.55	" 125	1.72	162.95	" 125	2.58	188.90	" 125	3.14	220.40	" 125	4.86	289.00
" 150	1.28	144.85	" 150	1.86	170.00	" 150	2.79	195.20	" 150	3.36	226.70	" 150	5.21	297.50
" 175	1.39	151.15	" 175	2.20	177.10	" 175	3.00	201.50	" 175	3.58	236.15	" 175	5.56	314.50
" 200	1.50	154.30	" 200	2.14	180.65	" 200	3.21	207.80	" 200	3.79	245.55	" 200	5.91	331.50
" 250	1.72	157.85	" 250	2.42	194.80	" 250	3.63	220.40	" 250	4.22	261.30	" 250	6.61	357.00
" 300	1.94	161.50	" 300	2.70	209.00	" 300	4.05	245.55	" 300	4.66	292.80	" 300	7.31	368.05
" 350	2.16	C/F	" 350	2.98	C/F	" 350	4.47	C/F	" 350	5.09	C/F	" 350	8.01	C/F
" 400	2.38	C/F	" 400	3.26	C/F	" 400	4.89	C/F	" 400	5.52	C/F	" 400	8.71	C/F
" 450	2.60	C/F	" 450	3.54	C/F	" 450	5.31	C/F	" 450	5.95	C/F	" 450	9.41	C/F
" 500	2.82	C/F	" 500	3.82	C/F	" 500	5.73	C/F	" 500	6.38	C/F	" 500	10.11	C/F
" 550	3.04	C/F	" 550	4.10	C/F	" 550	6.15	C/F	" 550	6.82	C/F	" 550	10.81	C/F
" 600	3.26	C/F	" 600	4.68	C/F	" 600	6.57	C/F	" 600	7.25	C/F	" 600	11.51	C/F
" 650	3.48	C/F	" 650	4.66	C/F	" 650	6.99	C/F	" 650	7.68	C/F	" 650	12.21	C/F
" 700	3.70	C/F	" 700	4.94	C/F	" 700	7.41	C/F	" 700	8.11	C/F	" 700	12.91	C/F
" 750	3.92	C/F	" 750	5.22	C/F	" 750	7.83	C/F	" 750	8.54	C/F	" 750	13.61	C/F
" 800	4.14	C/F	" 800	5.50	C/F	" 800	8.25	C/F	" 800	8.98	C/F	" 800	14.31	C/F
" 850	4.36	C/F	" 850	5.78	C/F	" 850	8.67	C/F	" 850	9.41	C/F	" 850	15.01	C/F
" 900	4.58	C/F	" 900	6.06	C/F	" 900	9.09	C/F	" 900	9.84	C/F	" 900	15.71	C/F
" 950	4.80	C/F	" 950	6.34	C/F	" 950	9.51	C/F	" 950	10.27	C/F	" 950	16.41	C/F
" 1000	5.02	C/F	" 1000	6.62	C/F	" 1000	9.93	C/F	" 1000	10.70	C/F	" 1000	17.11	C/F

C/F: Consult Factory for price and availability for these longer stroke, double rod models

Mounting options (no charge for standard tapped holes)

ø32 Bore		ø40 Bore		ø50 Bore		ø63 Bore		ø80 Bore	
Option	Price	Option	Price	Option	Price	Option	Price	Option	Price
LB	\$10.50	LB	\$11.35	LB	\$12.60	LB	\$15.10	LB	\$21.00
TC	C/F	TC	C/F	TC	C/F	TC	C/F	TC	C/F
FA or FB	11.95	FA or FB	12.60	FA or FB	15.35	FA or FB	17.45	FA or FB	27.45
CA	13.00	CA	14.70	CA	16.80	CA	20.60	CA	31.50
CB	14.70	CB	17.65	CB	20.15	CB	23.10	CB	40.75
CBB	30.50	CBB	34.00	CBB	41.15	CBB	44.95	CBB	79.60

Specifications and prices subject to change without notice or incurring obligation.

Price List

Cylinders (Weight conversion: lb = kg x 2.2)

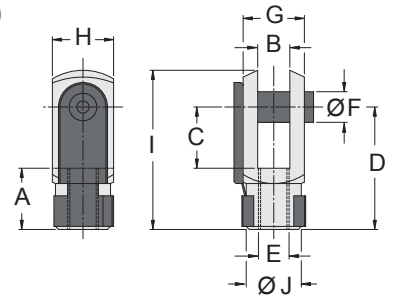
Model #	Weight (kg)	Price	Model #	Weight (kg)	Price
FAQ2R100					
" 25	4.20	..\$202.50	" 25	7.29	..\$330.00
" 50	4.48	..206.25	" 50	7.76	..335.00
" 75	4.76	..215.65	" 75	8.23	..346.70
" 100	5.04	..223.15	" 100	8.70	..356.70
" 125	5.32	..232.50	" 125	9.17	..368.30
" 150	5.60	..241.90	" 150	9.64	..380.00
" 175	5.88	..264.40	" 175	10.11	..391.70
" 200	6.16	..275.00	" 200	10.58	..401.70
" 250	6.72	..287.00	" 250	11.52	..423.35
" 300	7.28	..306.70	" 300	12.46	..446.70
" 350	7.84	..325.00	" 350	13.40	..468.35
" 400	8.40	..343.35	" 400	14.34	..490.00
" 450	8.96	..361.70	" 450	15.28	..513.35
" 500	9.52	..402.80	" 500	16.22	..630.10
" 550	10.08	..468.20	" 550	17.16	..651.90
" 600	10.64	..489.40	" 600	18.10	..678.40
" 650	11.20	..510.60	" 650	19.04	..703.15
" 700	11.76	..533.55	" 700	19.98	..729.65
" 750	12.32	..556.50	" 750	20.92	..756.15
" 800	12.88	..579.50	" 800	21.86	..780.90
" 850	13.44	..600.70	" 850	22.80	..807.40
" 900	14.00	..621.90	" 900	23.74	..833.90
" 950	14.56	..644.85	" 950	24.68	..858.60
" 1000	15.12	..667.80	" 1000	25.62	..885.10
FAQ2RW100					
" 25	4.74	..\$306.00	" 25	8.64	..\$561.00
" 50	5.12	..311.70	" 50	9.36	..569.50
" 75	5.50	..325.85	" 75	10.08	..589.35
" 100	5.88	..337.20	" 100	10.80	..606.35
" 125	6.26	..351.35	" 125	11.52	..626.20
" 150	6.64	..365.50	" 150	12.24	..646.00
" 175	7.02	..375.50	" 175	12.96	..665.85
" 200	7.40	..391.55	" 200	13.68	..682.85
" 250	8.16	..417.30	" 250	15.12	..719.70
" 300	8.92	..441.00	" 300	16.56	..759.35
" 350	9.68	..C/F	" 350	18.00	..C/F
" 400	10.44	..C/F	" 400	19.44	..C/F
" 450	11.20	..C/F	" 450	20.88	..C/F
" 500	11.96	..C/F	" 500	22.32	..C/F
" 550	12.72	..C/F	" 550	23.76	..C/F
" 600	13.48	..C/F	" 600	25.20	..C/F
" 650	14.24	..C/F	" 650	26.64	..C/F
" 700	15.00	..C/F	" 700	28.08	..C/F
" 750	15.76	..C/F	" 750	29.52	..C/F
" 800	16.52	..C/F	" 800	30.96	..C/F
" 850	17.28	..C/F	" 850	32.40	..C/F
" 900	18.04	..C/F	" 900	33.84	..C/F
" 950	18.80	..C/F	" 950	35.28	..C/F
" 1000	19.56	..C/F	" 1000	36.72	..C/F

C/F: Consult Factory for price and availability for these longer stroke, double rod models

Mounting options (standard tapped holes = N/C)

ø100 Bore		ø125 Bore	
Option	Price	Option	Price
LB	..\$25.20	LB	..\$46.20
TC	..C/F	TC	..C/F
FA or FB	..38.55	FA or FB	..43.45
CA	..44.00	CA	..49.15
CB	..53.40	CB	..49.15
CBB	..93.85	CBB	..107.10

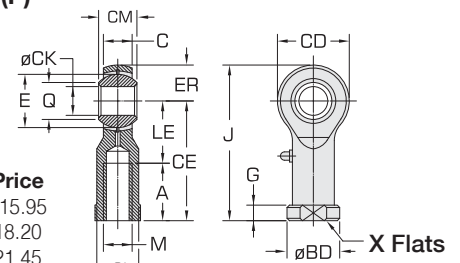
● Rod clevis and pin (YI) ISO 8140 DIN 71752



Part No.	Price
FAE25-057A	..\$10.45
FAE40-057A	..13.15
FAQR50-057A	..26.75
FAQR80-057A	..46.85
FAQR125-057A	..70.70

Part No.	A	B	C	D	E	F	G	H	I	J
FAE25-057A	20	10	20	40	M10x1.25	10	20	20	52	18
FAE40-057A	24	12	24	48	M12x1.25	12	24	24	62	20
FAQR50-057A	32	16	32	64	M16x1.5	16	32	32	83	26
FAQR80-057A	40	20	40	80	M20x1.5	20	40	40	105	34
FAQR125-057A	56	30	54	110	M27x2.0	30	55	55	148	48

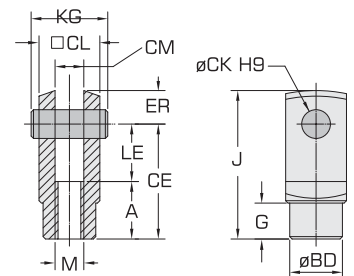
● Spherical rod end (P) DIN 648 DIN 24335



Part No.	Price
FAE25-061	..\$15.95
FAE40-061	..18.20
FAQR50-061	..21.45
FAQR80-061	..24.55
FAQR125-061	..137.80

Part No.	A	C	E	G	J	M	Q	X	øBD	CE	øCK	øCL	CM	CD	ER	LE
FAQR25-061	21	11	16.1	6.5	56	M10x1.25	12.9	17	19	43	10	15	14	26	13	22
FAQR40-061	24	12	22.2	6.5	65	M12x1.25	15.4	19	22	50	12	17.5	16	30	15	26
FAQR50-061	33	15	28.5	8	83	M16x1.5	19.4	22	27	64	16	22	21	38	19	31
FAQR80-061	40	18	34.9	10	100	M20x1.5	24.4	32	37	77	20	27.5	25	46	23	37
FAQR125-061	53	26	47.6	15	143.5	M27x2.0	32.3	41	50	110	30	40	35	67	33.5	54

● Rod clevis and pin (Y)



Part No.	Price
FAQR32-057	..\$7.45
FAQR40-057	..8.30
FAQR50-057	..13.80
FAQR80-057	..23.05
FAQR125-057	..30.35

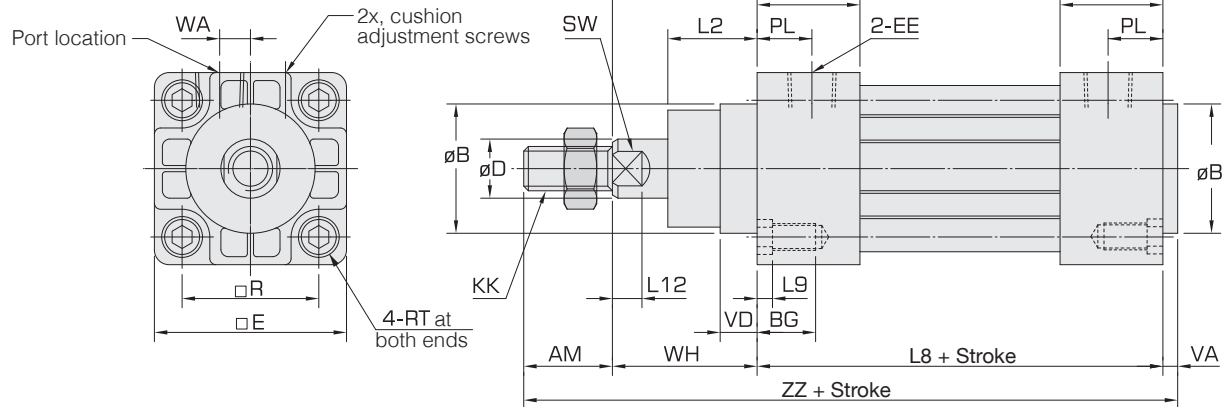
Part No.	A	G	J	M	CE	øCK	øCL	CM	øBD	ER	KG	LE
FAQR32-057	20	15	52	M10x1.25	40	10	19	10	17	12	26	20
FAQR40-057	24	15	60	M12x1.25	48	12	24	12	22	12	32	24
FAQR50-057	32	18	83	M16x1.5	64	16	32	16	28	19	40.5	32
FAQR80-057	40	20	105	M20x1.5	80	20	38	20	37	25	46	40
FAQR125-057	32	15	98	M27x2.0	72	24	50	24	42	26	58	40

Specifications and prices subject to change without notice or incurring obligation.

FAQ2R Series Dimensions (mm)

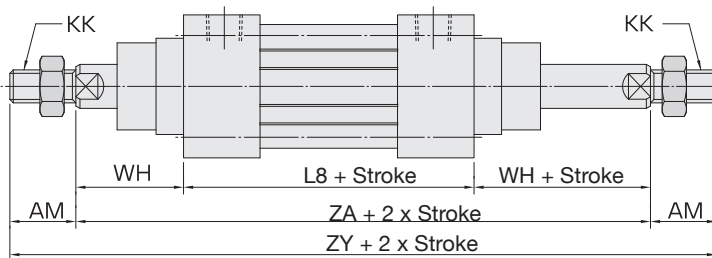
ISO CYLINDER (ISO 6431,VDMA24562)

● Single Rod End (FAQ2R □□ x □□)



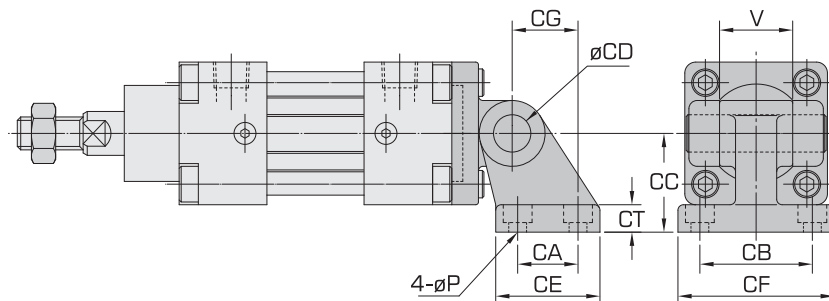
Bore	AM	øB	BG	øD	E	EE	G	KK	L2	L8	L9	L12	PL	R	RT	SW	VA	VD	WA	WH	ZX	ZZ
ø32	22	30	15	12	47	G1/8"	26	M10X1.25	16	94	6	6	10	32.5	M6	10	4	7	4	26	120	146
ø40	24	35	15	16	53	G1/4"	30	M12X1.25	20	105	6	8	15	38	M6	13	5	9	4	30	135	164
ø50	32	40	18	20	65	G1/4"	30	M16X1.5	25	106	6	8	15	46.5	M8	17	5	11	4	37	143	180
ø63	32	45	18	20	75	G3/8"	32	M16X1.5	25	121	6	8	16	56.5	M8	17	5	13	7	37	158	195
ø80	40	45	22	25	95	G3/8"	38	M20X1.5	32	128	6	10	19	72	M10	22	4	15	7	46	174	218
ø100	40	56	22	25	115	G1/2"	40	M20X1.5	34.5	138	6	10	19.75	89	M10	22	6	16	7	51	189	235
ø125	54	60	22	35	140	G1/2"	40	M27X2.0	40	160	6	15	16	110	M12	32	8	8	0	65	225	287

● Double Rod End (FAQ2RW □□ x □□)



Bore	AM	KK	L8	WH	ZA	ZY
ø32	22	M10X1.25	94	26	146	190
ø40	24	M12X1.25	105	30	165	213
ø50	32	M16X1.5	106	37	180	244
ø63	32	M16X1.5	121	37	195	259
ø80	40	M20X1.5	128	46	220	300
ø100	40	M20X1.5	138	51	240	320
ø125	54	M27X2.0	160	65	290	398

● Eye Mount Base combined with Pivot Mount and Pin (CBB)

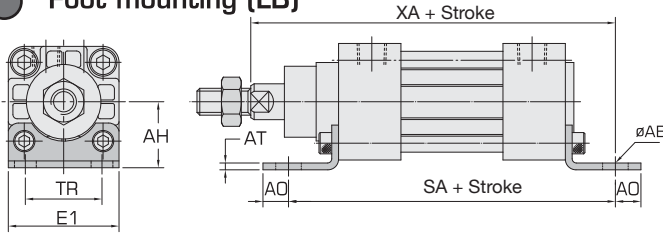


Bore	CA	CB	CC	øCD	CE	CF	CG	CT	V	øP
ø32	18	38	32	10	32	54	21	8	26	ø7thru hole, ø11c'bore, dp5
ø40	22	41	36	12	38	57	24	10	28	ø7thru hole, ø11c'bore, dp5
ø50	30	50	45	12	50	70	33	12	32	ø9thru hole, ø14c'bore, dp6
ø63	35	52	50	16	55	72	37	12	40	ø9thru hole, ø14c'bore, dp6
ø80	40	66	63	16	64	90	47	14	50	ø11thru hole, ø18c'bore, dp8
ø100	50	76	71	20	74	100	55	16	60	ø11thru hole, ø18c'bore, dp8
ø125	60	94	90	25	90	124	70	20	70	ø11thru hole, ø18c'bore, dp8

FAQ2R Series Dimensions (mm)

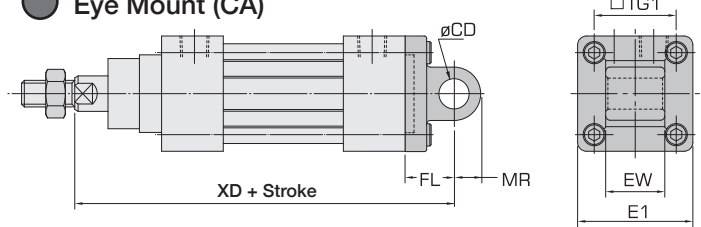
ISO CYLINDER (ISO 6431,VDMA24562)

Foot mounting (LB)



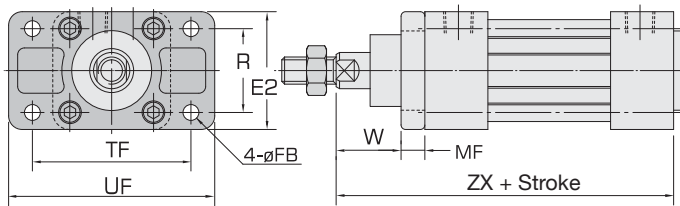
Bore	øAB	AH	AO	AT	E1	SA	TR	XA
ø32	7	32	8	5	47	142	32	144
ø40	9	36	10	5	53	161	36	163
ø50	9	45	10	5	65	170	45	175
ø63	9	50	10	5	75	185	50	190
ø80	12	63	13	6	95	210	63	215
ø100	14	71	15	6	115	220	75	230
ø125	16	90	25	8	140	250	90	270

Eye Mount (CA)



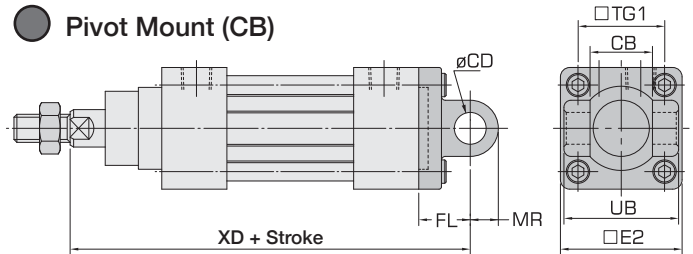
Bore	øCD	□E1	EW	FL	MR	□TG1	XD
ø32	10	47	26	22	10.5	32.5	142
ø40	12	53	28	25	13	38	160
ø50	12	65	32	27	13	46.5	170
ø63	16	75	40	32	17	56.5	190
ø80	16	95	50	36	17	72	210
ø100	20	115	60	41	21	89	230
ø125	25	140	70	50	25	110	275

Front flange (FA)



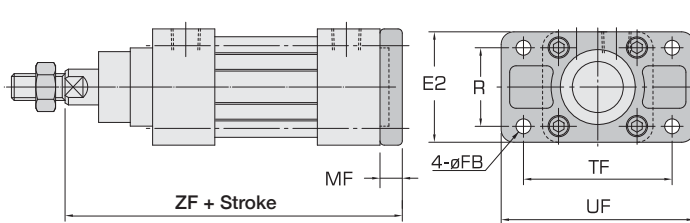
Bore	E2	FB	MF	R	TF	UF	W	ZX
ø32	50	7	10	32	64	79	16	120
ø40	55	9	10	36	72	90	20	135
ø50	65	9	12	45	90	110	25	143
ø63	75	9	12	50	100	120	25	158
ø80	95	12	16	63	126	153	30	174
ø100	120	14	16	75	150	178	35	189
ø125	140	16	20	90	180	220	45	225

Pivot Mount (CB)



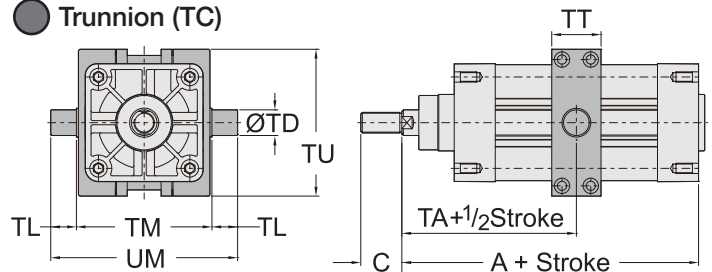
Bore	CB	øCD	□E2	FL	MR	□TG1	UB	XD
ø32	26	10	47	22	10.5	32.5	45	142
ø40	28	12	53	25	13	38	52	160
ø50	32	12	65	27	13	46.5	60	170
ø63	40	16	75	32	16	56.5	70	190
ø80	50	16	95	36	17	72	90	210
ø100	60	20	115	41	21	89	110	230
ø125	70	25	140	50	25	110	130	275

Rear Flange (FB)



Bore	E2	FB	MF	R	TF	UF	ZF
ø32	50	7	10	32	64	79	130
ø40	55	9	10	36	72	90	145
ø50	65	9	12	45	90	110	155
ø63	75	9	12	50	100	120	170
ø80	95	12	16	63	126	153	190
ø100	120	14	16	75	150	178	205
ø125	140	16	20	90	180	220	245

Trunnion (TC)



Bore	A	C	TT	TA	øTD	TL	TM	TU	UM
ø32	—	—	—	—	—	—	—	—	—
ø40	135	24	30	82.5	16	16	63	70	95
ø50	—	—	—	—	—	—	—	—	—
ø63	—	—	—	—	—	—	—	—	—
ø80	174	40	44	110	20	20	110	120	150
ø100	189	40	48	120	25	25	132	143	182
ø125	225	54	52	145	25	25	160	175	210

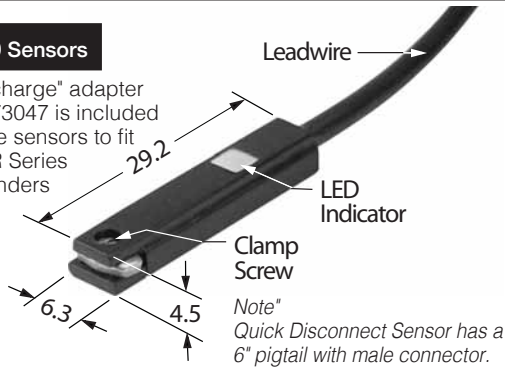
Notes

- A) 8x clamp screws lock TC mount to extruded housing rails. Dim. 'TA' is adjustable by the customer if necessary. Loosen clamp screws and adjust to desired position. Apply Loctite 242 (blue) to clamp screw threads and tighten.
- B) TC mount may interfere with application of piston position sensors when using short strokes, sensing mid-stroke positions or if the TC mount is placed near either end-of-stroke.
- C) Mount is steel and may affect magnetic field required for effective position sensing. All trunnion pins are steel.

Position Sensors

9G49 Sensors

A "no charge" adapter # TEZ73047 is included with the sensors to fit FAQ2R Series air cylinders



Please order sensors and female cordsets separately.

Reed (LED)

5-120 VDC/VAC, 0.03 Amp Max., 0.005 Amp Min., 4 Watt Max., 2.0 Voltage Drop

Prewired 9 ft. Leadwire

Part No. Price
 9G49-000-002 \$14.70

Quick Disconnect*

Part No. Price
 9G49-000-302 \$17.35

Electronic (LED)

Sourcing, PNP, 5-28 VDC, 0.20 Amp Max., 0.5 Voltage Drop

Prewired 9 ft. Leadwire

Part No. Price
 9G49-000-031 28.80

Quick Disconnect*

Part No. Price
 9G49-000-331 31.45

Electronic (LED)

Sinking, NPN, 5-28VDC, 0.20 Amp Max., 0.5 Voltage Drop

Prewired 9 ft. Leadwire

Part No. Price
 9G49-000-032 28.80

Quick Disconnect*

Part No. Price
 9G49-000-332 31.45

Sensor Adapter

Part No. **TEZ73047** Fits All Bore Sizes. No charge

Female Cord Sets

Cord length

1 Meter

Part No. Price
 CFC-1M \$15.05

2 Meters

Part No. Price
 CFC-2M 16.85

5 Meters

Part No. Price
 CFC-5M 21.30



Installing sensors in the mounting slot

